

14 March 2019, London

Achieving greater depth in primary maths through talk for learning

A one-day workshop exploring strategies to strengthen mathematical talk in the classroom, to deepen, extend and refocus learning.

Who should attend? Primary school teachers, more able coordinators/leads, maths subject leaders

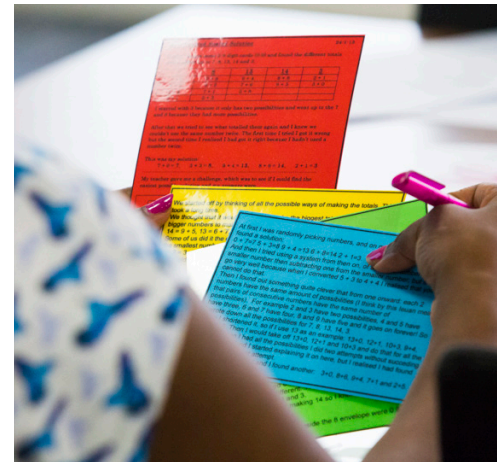
Learning outcomes:

- Develop the language of discussion in your school
- Explore strategies to encourage mathematical talk in the classroom
- Instigate "prior learning discussions" to help learners reflect on progress
- Promote discussion through learner collaboration
- Develop effective questioning and inspire learners' own questioning
- Refocus learning, and promote reasoning and problem-solving skills

Cost

NACE members £230 +VAT

Non-members £325 +VAT



Book your place online: www.nace.co.uk/events

Achieving greater depth in primary maths through talk for learning

Programme

- 09:00 Coffee and registration
- 09:30 **Outcomes for the day**
- The skills and characteristics of greater depth mathematicians**
- What do we mean by “mastery with greater depth”?**
- How does provision for a “higher ability” child compare to provision for a child working at “greater depth”?**
- Key features of greater depth tasks**
- Developing the language for mathematical discussion**
- 11:00 Coffee
- 11:20 **Instigating discussion through prior learning discussions and collaboration**
- 12:45 Lunch
- 13:30 **Deepening learning through questioning**
- How can we develop talk for learning through a variety of reasoning tasks and opportunities?**
- 15:00 **Reflections and action planning**
- 15:15 Close

Programme subject to change.

Workshop lead



Sarah Carpenter

During her 20-year career in education, Sarah has taken on a variety of roles in the early years and primary sectors. Alongside working as a class teacher, she held local authority advisory roles in science and in provision for able learners, leading her school to become the fourth nationally to achieve the NACE Challenge Award.

Sarah moved on from deputy headship to work with an international company, first as a literacy consultant and then as the maths consultant for the UK and Europe. She returned to West Berkshire local authority as early years adviser, focusing on communication, language and literacy, and later became the school improvement adviser for SEND.

More recently, Sarah has reignited her passion for literacy and numeracy, becoming West Berkshire's school improvement adviser for primary maths and English. In this role, she is the central provider of CPD, and oversees standards in 65 primary schools.

As a NACE associate, Sarah supports schools in developing their provision for more able learners, through specialised seminars and training days, as well as bespoke CPD for individual schools.

NACE CPD

With 35 years' experience of supporting schools to develop high-quality provision for more able learners, NACE offers a range of courses and conferences throughout the year. All programmes are grounded in research and evidence-based good practice, linked to relevant curriculum and policy developments, and aligned with the DfE Standard for Teachers' Professional Development.

For more information and our code of conduct, visit nace.co.uk/cpd



Bespoke support for your school

Alongside our annual programme of courses and conferences, our team of expert trainers and consultants are available to deliver in-school CPD, consultancy and review services, tailored to meet the needs of your staff, school and learners. This includes subject-specific support, as well as bespoke programmes for clusters, alliances, trusts and international schools.

Contact us to plan your programme: cpd@nace.co.uk

